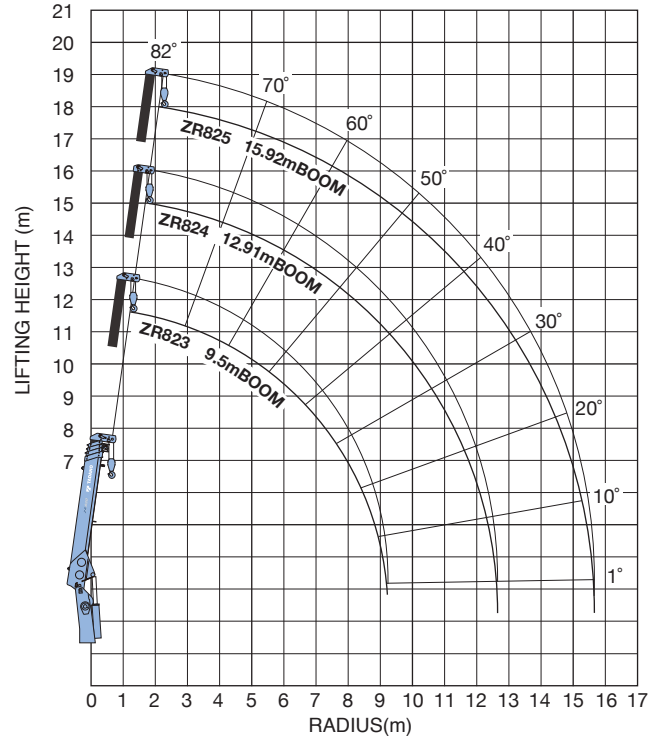


TECHNICAL SPECIFICATIONS

MODEL	TM-ZR823	TM-ZR824	TM-ZR825
MAXIMUM LIFTING CAPACITY	8,200kg at 1.8m (6-part lines)		
CRANE CAPACITY	4,900kg at 3.1m (4-part lines)		
BOOM	Fully hydraulic telescoping boom	Fully powered partly synchronized telescoping boom	
Sections	3	4	5
Length	4.20m-9.50m	4.31m-12.91m	4.40m-15.92m
Extending Speed	5.3m / 17s	8.6m / 23s	11.5m / 30s
Elevation Range/Speed	1° to 82° / 13s		
Max. Hook Height*	Approx. 11.5m*	Approx. 14.9m*	Approx. 17.8m*
Max. Load Radius*	9.25m*	12.66m*	15.67m*
WINCH	Hydraulic motor driven. Spur gear speed reduction, provided with mechanical brake.		Hydraulic motor driven. Spur gear speed reduction, provided with mechanical brake and cable follower.
Max. Single Line Pull	14.72kN {1,500kgf}		
Max. Single Line Speed	64m/min. (at 4th layer)		
Wire rope (Diameter x length)	10mm x 63m	10mm x 80m	10mm x 95m
SWING	Hydraulic motor driven. Worm gear speed reduction. Continuous 360° full circle swing on ball bearing slew ring. Automatic swing lock.		
Speed	2.5 min ⁻¹ {rpm}		
OUTRIGGERS	Hydraulically extended sliders and hydraulically extended jacks. Integral with crane frame. Power up and down. Max. : 3.9m Mid. : 3.1m Min. : 2.25m		
Extended Width			
HYDRAULIC SYSTEM	Tandem gear pump		
Pump	Multiple control valves with integral safety valve		
Control Valves	Load meter Load indicator		
STANDARD SAFETY EQUIPMENT	Over-winding alarm P.T.O. indicator lamp		
	Hook safety latch Level gauge		
	Hydraulic safety valves, check valves and holding valves		
SUITABLE TRUCKS	Gross vehicle mass 20,000 to 25,000kg		

WORKING RANGE



TECHNICAL SPECIFICATION NOTE:
1. Operating speeds of the crane are guaranteed under the conditions that the pump delivery is 85L/min.
2. *No allowance included for boom deflection under loaded conditions.

WORKING RANGE NOTE:
Lifting heights and boom angles are based on a straight (unloaded) boom, and allowance should be made for boom deflection under loaded conditions.



TRUCK LOADER CRANE

ZR820

For Heavy-duty Vehicle

CARGO CRANE

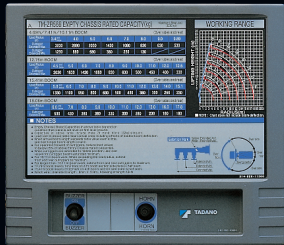


RENEWAL 8.2 TON CRANE TM-ZR820

TM-ZR820 is renewed 8.2 ton class crane for any heavy duty lifting and transportation job.

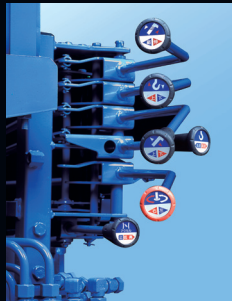
Centralized Control Panel

Installed on both sides of the boom post is the centralized control panel where operating switches and performance chart needed for crane operation are grouped together and arranged on a single panel each.



Operating Levers in Vertical Order

Crane operation levers are vertically arranged at comfortable height to ensure easy-to-handle operation including lever inching work and powerful accelerating operation, and it contributes the longer body space.



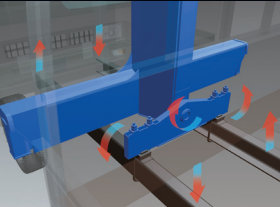
Automatic Swing Lock System

The boom is locked securely to prevent accidental boom swing out during driving.



Three-Point Support System (Equalizer Crane Support)

The equalizer crane support system protects the chassis frame by evenly distributing the load applied to the frame during vehicle travel to prevent excessive stress concentration at any one point.



Strong Outriggers

The outriggers, with a maximum width of 3.9 m, have a secure hydraulic-powered extension system which substantially enhances crane performance. The hydraulic-powered extension beams make your work easy and effective.

Tandem Hydraulic pumps

One pump is always distributing oil to SWING and the another for other 3 operation (boom elevation, boom telescoping, winch) for fast operation speed, and 2 pumps distribute all oil to other than SWING when you do not make SWING operation, for fast operation.

RATED LIFTING CAPACITIES Empty Chassis Rated Capacities

Table A

TM-ZR823								
4.2m boom								
Load Radius (m)	1.8 and below	2.25	3.1	3.5	3.95			
Rated Lifting Capacity (kg)	8,200	6,000	4,900	4,200	3,750			
6.86m boom								
Load Radius (m)	2.25 and below	3.1	3.5	4.0	4.5	5.0	6.0	6.61
Rated Lifting Capacity (kg)	6,000	4,900	4,200	3,700	2,750	2,400	1,850	1,600
9.5m boom								
Load Radius (m)	4.0 and below	4.5	5.0	6.0	7.0	8.0	9.25	
Rated Lifting Capacity (kg)	3,000	2,750	2,400	1,850	1,450	1,200	1,000	

TM-ZR824

4.31m boom								
Load Radius (m)	1.8 and below	2.25	3.1	3.5	4.06			
Rated Lifting Capacity (kg)	8,200	6,000	4,900	4,200	3,650			
7.19m boom								
Load Radius (m)	2.25 and below	3.1	3.5	4.0	4.5	5.0	6.0	6.94
Rated Lifting Capacity (kg)	6,000	4,900	4,200	3,700	2,700	2,350	1,800	1,450
10.05m boom								
Load Radius (m)	4.1 and below	5.0	6.0	7.0	8.0	9.0	9.8	
Rated Lifting Capacity (kg)	3,000	2,350	1,800	1,400	1,150	1,000	850	
12.91m boom								
Load Radius (m)	4.1 and below	5.0	6.0	7.0	8.0	9.0	10.0	11.0
Rated Lifting Capacity (kg)	3,000	2,350	1,800	1,400	1,150	1,000	850	750

TM-ZR825

4.4m boom										
Load Radius (m)	1.8 and below	2.25	3.1	3.5	4.15					
Rated Lifting Capacity (kg)	8,200	6,000	4,900	4,200	3,550					
7.28m boom										
Load Radius (m)	2.25 and below	3.1	3.5	4.0	4.5	5.0	6.0	7.03		
Rated Lifting Capacity (kg)	6,000	4,900	4,200	3,700	2,700	2,350	1,800	1,400		
10.16m boom										
Load Radius (m)	4.0 and below	4.5	5.0	6.0	7.0	8.0	9.0	9.91		
Rated Lifting Capacity (kg)	3,000	2,650	2,300	1,700	1,300	1,050	850	750		
13.04m boom										
Load Radius (m)	4.0 and below	5.0	6.0	7.0	8.0	9.0	10.0	11.0	12.0	12.7
Rated Lifting Capacity (kg)	3,000	2,300	1,700	1,300	1,050	850	750	650	500	400
15.92m boom										
Load Radius (m)	4.7 and below	6.0	7.0	8.0	9.0	10.0	11.0	12.0	13.0	14.0
Rated Lifting Capacity (kg)	2,600	1,700	1,300	1,050	850	750	650	500	400	350

Table D

TM-ZR823								
4.2m boom								
Load Radius (m)	1.8 and below	2.25	3.1	3.5	3.95			
Rated Lifting Capacity (kg)	8,200	6,000	4,900	4,200	3,750			
6.86m boom								
Load Radius (m)	2.25 and below	3.1	3.5	4.0	4.5	5.0	6.0	6.61
Rated Lifting Capacity (kg)	6,000	4,900	4,200	3,700	3,300	2,900	2,250	2,000
9.5m boom								
Load Radius (m)	4.5 and below	5.0	6.0	7.0	8.0	9.25		
Rated Lifting Capacity (kg)	3,000	2,900	2,250	1,850	1,550	1,300		

TM-ZR824

4.31mm boom								
Load Radius (m)	1.8 <small>and below</small>	2.25	3.1	3.5	4.06			
Rated Lifting Capacity (kg)	8,200	6,000	4,900	4,200	3,650			
7.19m boom								
Load Radius (m)	2.25 <small>and below</small>	3.1	3.5	4.0	4.5	5.0	6.0	6.94
Rated Lifting Capacity (kg)	6,000	4,900	4,200	3,700	3,300	2,900	2,200	1,800
10.05m boom								
Load Radius (m)	4.5 <small>and below</small>	5.0	6.0	7.0	8.0	9.0	9.8	
Rated Lifting Capacity (kg)	3,000	2,900	2,200	1,800	1,550	1,350	1,200	
12.91m boom								
Load Radius (m)	4.5 <small>and below</small>	5.0	6.0	7.0	8.0	9.0	10.0	11.0
Rated Lifting Capacity (kg)	3,000	2,650	2,200	1,800	1,500	1,300	1,100	950

TM-ZR825

4.4m boom									
Load Radius (m)	1.8 and below	2.25	3.1	3.5	4.15				
Rated Lifting Capacity (kg)	8,200	6,000	4,900	4,200	3,550				
7.28m boom									
Load Radius (m)	2.25 and below	3.1	3.5	4.0	4.5	5.0	6.0	7.03	
Rated Lifting Capacity (kg)	6,000	4,900	4,200	3,700	3,300	2,900	2,200	1,700	
10.16m boom									
Load Radius (m)	4.5 and below	5.0	6.0	7.0	8.0	9.0	9.91		
Rated Lifting Capacity (kg)	3,000	2,700	2,200	1,750	1,350	1,100	950		
13.04m boom									
Load Radius (m)	4.5 and below	5.0	6.0	7.0	8.0	9.0	10.0	11.0	12.0
Rated Lifting Capacity (kg)	3,000	2,600	2,000	1,700	1,350	1,100	950	850	700
15.92m boom									
Load Radius (m)	5.0 and below	6.0	7.0	8.0	9.0	10.0	11.0	12.0	13.0
Rated Lifting Capacity (kg)	2,600	2,000	1,650	1,350	1,100	950	850	700	600
								500	400

RATED LIFTING CAPACITIES NOTE:
The mass of hook (90kg), slings and all similarly used load handling devices must be added to the mass of the load.