

TM-ZE290/260

For Small Size Vehicles



IDEAL Cargo Crane, TADANO ZE

The ZE features all the Tadano Cargo Crane technologies that are recognized the world over.

The key development concepts remain:

EXCELSIOR QUALITY, EASY OPERATION AND EASY MAINTENANCE.

The TM-ZE290/260 series,

with a lifting capacity of 3.03/2.63 tons,

and a choice of 4 different lengths of the boom are available to meet your lifting requirements.

CENTRALIZED CONTROL PANELS

Installed on both sides of the slewing post are the centralized control panels where operating switches and the lifting charts needed for crane operation are grouped together and arranged on a single panel.

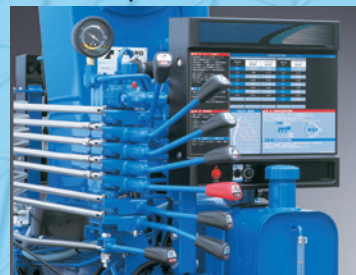


LEFT-HAND SIDE

RIGHT-HAND SIDE

RESPONDING TO OPERATOR'S COMMAND

Equipped with optimally matched, high-performance control valves, the operating levers provide improved responsiveness and fine-tuned control. Operation is fast or slow in accordance with operator's command. The stainless rods between the left and right operation levers are provided as standard.

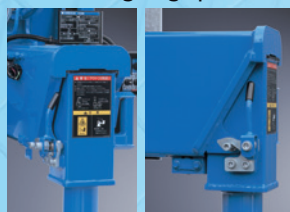


LOAD METER

QUICKER WORK WITH ADVANCED OUTRIGGER MECHANISM

The outrigger sliders can be easily operated, using a grip to lock/release and extend/retract them. The new lock system prevents the outriggers from swinging out during traveling.

A level gauge is provided as standard equipment.



NEW LOCK SYSTEM

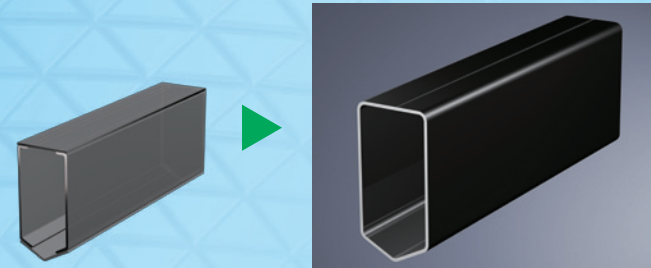


LEVEL GAUGE

STRONGER AND LIGHTER BOOM

Tadano's unique pentagonal boom is made of high-tensile steel and the section of boom has a structure of bended one piece steel plate for lighter boom weight and powerful lifting capability.

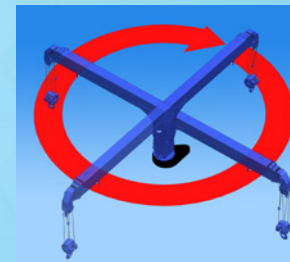
Special valves enable smooth boom extension and retraction for smoother operation to reduce a shock when telescoping the boom.



FULL CIRCLE, CONTINUOUS SLEWING

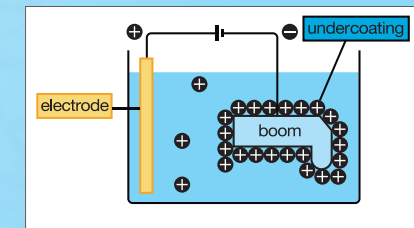
The newly designed compact slewing post improves performance providing FULL CIRCLE, continuous rotation for more efficient operations.

AUTOMATIC SLEWING LOCK: The boom is mechanically locked at the slewing post base which prevents boom rotation during traveling.



CATIONIC ELECTRO-DEPOSITION COATING

The crane is undercoated by Cationic Electro-deposition method. The parts are dipped in cationic solution, and even the narrow inner booms and frames are thoroughly undercoated.

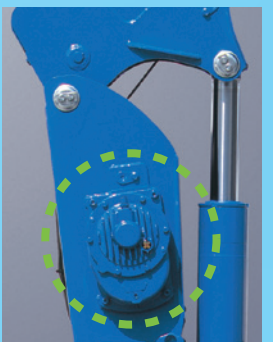


STRONGER WINCH

The advantages of the enlarged winch drum and plunger motor are evident during start-up when maximum power is required. Re-hoisting with a load on the hook can also be handled with ease.

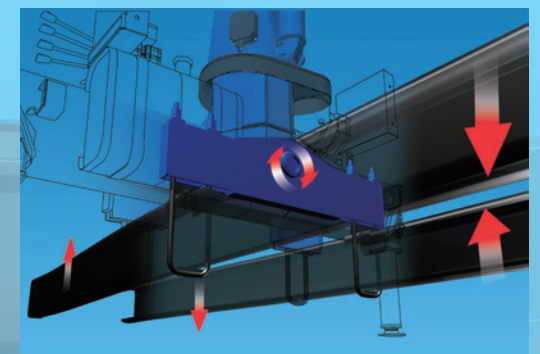
The winch reduction gear comes equipped with a failsafe automatic brake.

From the pitch of the drum grooves to the fitting of the guide sheave, cable winding has been improved in every detail so as to prevent the cable from winding off position.



THREE-POINT SUPPORT SYSTEM (Equalizer Crane Support)

The equalizer crane support system protects the chassis frame by evenly distributing the load applied to the frame during the lifting operation and the vehicle travel to prevent excessive stress concentration at any one point.



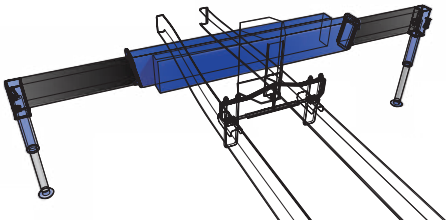
TM-ZE290 series



HOOK IN SYSTEM (TM-ZE290MH only)

The TM-ZE290MH features the "Hook-In" system to further enhance work efficiency. A pull of a lever and the crane hook is stowed automatically.

No more manual fixing.

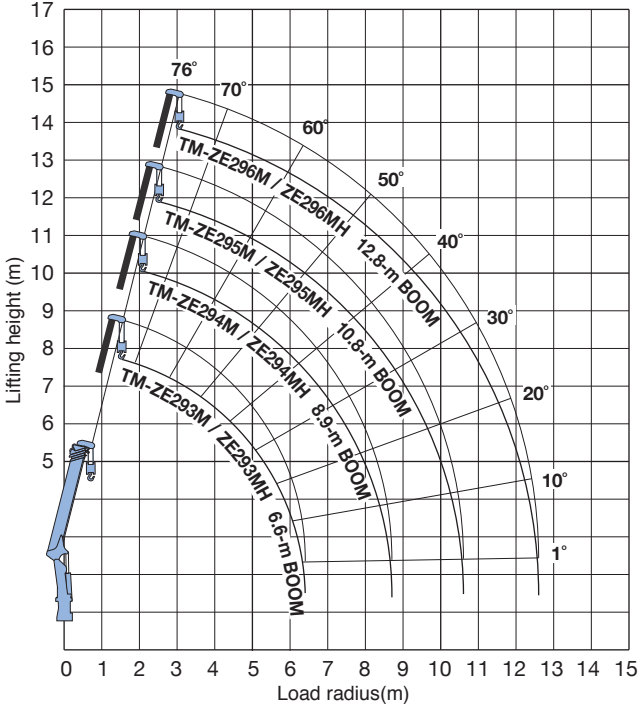


PARABOX OUTRIGGER (TM-ZE290 series)

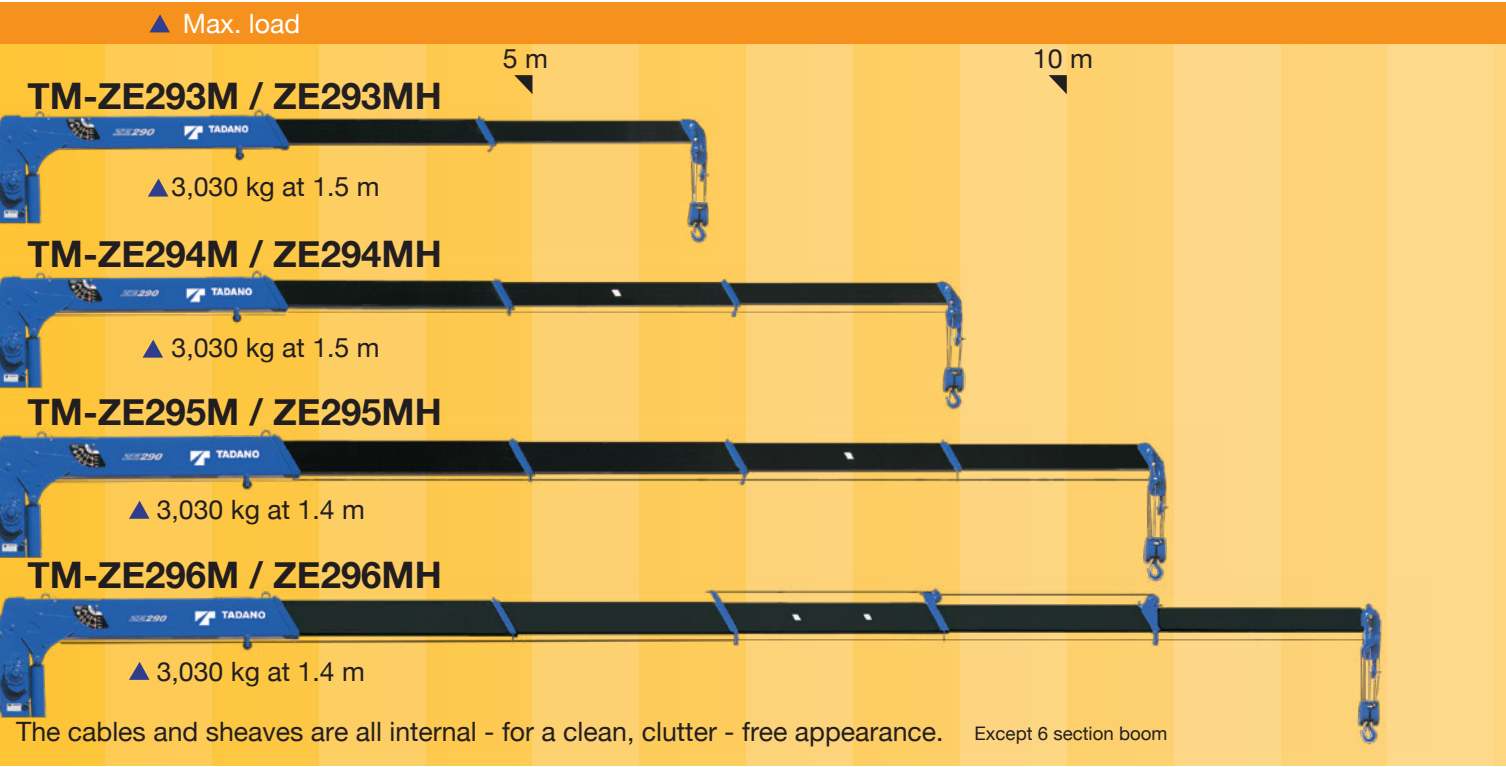


TM-ZE294MH

WORKING RANGE



NOTES FOR WORKING RANGE:
Boom deflection, and subsequent radius and boom angle change must be accounted for when applying load to hook.



The cables and sheaves are all internal - for a clean, clutter - free appearance. Except 6 section boom

TECHNICAL SPECIFICATIONS

MODEL	TM-ZE293M	TM-ZE293MH*	TM-ZE294M	TM-ZE294MH*	TM-ZE295M	TM-ZE295MH*	TM-ZE296M	TM-ZE296MH*
CRANE CAPACITY	3,030 kg at 1.5 m (4-parts of line)		3,030 kg at 1.5 m (4-parts of line)		3,030 kg at 1.4 m (4-parts of line)		3,030 kg at 1.4 m (4-parts of line)	
BOOM	Fully powered telescoping boom of pentagonal box construction.							
Number of sections	3		4		5		6	
Length	2.85 m - 6.6 m		3.17 m - 8.9 m		3.13 m - 10.8 m		3.23 m - 12.8 m	
Extending speed	3.75 m / 10.5 s		5.73 m / 13 s		7.67 m / 15.5 s		9.57 m / 17 s	
Elevating range/speed	1° to 76° / 6 s							
Max. lifting height**	approx. 7.8 m**		approx. 10.0 m**		approx. 11.8 m**		approx. 13.8 m**	
Max. load radius**	6.4 m**		8.7 m**		10.6 m**		12.6 m**	
WINCH	Hydraulic motor driven. Spur gear speed reduction, provided with mechanical brake.							
Max. single line pull	7.45 kN {760 kgf}							
Max. single line speed	68 m/min. (at 4th layer)							
Wire rope (Diameter x length)	8 mm x 45 m		8 mm x 56 m		8 mm x 66 m		8 mm x 75 m	
SLEWING	Hydraulic motor driven. Worm gear speed reduction. Continuous 360° full circle slewing on ball bearing slew ring. Automatic slewing lock.							
Slewing speed	2.5 min ⁻¹ {rpm}							
OUTRIGGERS	Manually extended sliders and hydraulically extended jacks Integral with crane frame							
Extension width	Max. : 3.4 m, Mid. : 2.9m / 2.4 m, Min. : 1.72 m							
HYDRAULIC SYSTEM	Multiple control valves with integral safety valves							
Control valves	•Load meter •Load indicator •Anti-two-block alarm •Hoisting limiter •P.T.O. indicator lamp							
STANDARD SAFETY DEVICES	•Hook safety latch •Hydraulic safety valves •Level gauge							
SUITABLE TRUCKS	Gross vehicle mass 4,000 to 8,000 kg							

* WITH HOOK STOWING DEVICE. Mechanically stows hook beneath boom head.
** Boom deflection, and subsequent radius and boom angle change must be accounted for when applying load to hook.

RATED LIFTING CAPACITIES (With empty chassis)

Table A TM-ZE293M / ZE293MH									
● 2.85-m/4.74-m boom									
Load radius (m)	1.5 and below	2.0	2.5	3.0	3.5	4.0	4.54		
Rated lifting capacity (kg)	3,030	2,280	1,730	1,230	930	730	630		
● 6.6-m boom									
Load radius (m)	2.2 and below	2.5	3.0	3.5	4.0	4.5	5.0	5.5	6.0
Rated lifting capacity (kg)	1,880	1,630	1,230	930	730	580	480	430	380
● 8.9-m boom									
Load radius (m)	3.0 and below	3.5	4.0	4.5	5.0	6.0	7.0	8.0	8.7
Rated lifting capacity (kg)	980	830	680	450	350	280	230	200	
● 10.8-m boom									
Load radius (m)	4.0 and below	4.5	5.0	5.5	6.0	6.4	6.8	7.0	7.2
Rated lifting capacity (kg)	480	430	380	330	280	230	200	180	150
● 12.8-m boom									
Load radius (m)	5.3 and below	6.0	7.0	8.0	9.0	10.0	11.0	12.6	
Rated lifting capacity (kg)	280	240	210	180	160	140	130	100	
Table C TM-ZE293M / ZE293MH									
● 2.85-m/4.74-m boom									
Load radius (m)	1.5 and below	2.0	2.5	3.0	3.5	4.0	4.54		
Rated lifting capacity (kg)	3,030	2,280	1,830	1,430	1,080	830	730		
● 6.6-m boom									
Load radius (m)	2.2 and below	2.5	3.0	3.5	4.0	4.5	5.0	5.5	6.0
Rated lifting capacity (kg)	1,880	1,630	1,330	1,030	830	680	580	530	480
● 7.0-m boom									
Load radius (m)	2.2 and below	2.5	3.0	3.5	4.0	4.5	5.0	5.5	6.0
Rated lifting capacity (kg)	1,880	1,630	1,330	1,030	800	680	580	480	430
● 8.9-m boom									
Load radius (m)	3.0 and below	3.5	4.0	5.0	6.0	7.0	8.0	8.7	
Rated lifting capacity (kg)	980	880	780	550	430	330	280	250	
● 10.8-m boom									
Load radius (m)	4.0 and below	4.5	5.0	5.5	6.0	6.4	6.8	7.0	7.2
Rated lifting capacity (kg)	480	430	380	300	260	230	200	180	150
● 12.8-m boom									
Load radius (m)	5.3 and below	6.0	7.0	8.0	9.0	10.0	11.0	12.6	
Rated lifting capacity (kg)	280	240	210	180	160	140	130	100	
Table D TM-ZE294M / ZE294MH									
● 3.17-m/5.12-m boom									
Load radius (m)	1.5 and below	2.0	2.5	3.0	3.5	4.0	4.5	4.92	
Rated lifting capacity (kg)	3,030	2,280	1,830	1,380	1,030	830	680	580	
● 7.01-m boom									
Load radius (m)	2.2 and below	2.5	3.0	3.5	4.0	4.5	5.0	5.5	6.0
Rated lifting capacity (kg)	1,880	1,630	1,330	1,030	800	680	580	480	430
● 8.9-m boom									
Load radius (m)	3.0 and below	3.5	4.0	5.0	6.0	7.0	8.0	8.7	
Rated lifting capacity (kg)	980	880	780	550	430	330	280	250	
● 10.8-m boom									
Load radius (m)	4.0 and below	4.5	5.0	5.5	6.0	6.4	6.8	7.0	7.2
Rated lifting capacity (kg)	480	430	380	300	260	230	200	180	150
● 12.8-m boom									
Load radius (m)	5.3 and below	6.0	7.0	8.0	9.0	10.0	11.0	12.6	
Rated lifting capacity (kg)	280	240	210	180	160	140	130	100	
Table E TM-ZE295M / ZE295MH									
● 3.13-m/5.07-m boom									
Load radius (m)	1.4 and below	2.0	2.5	3.0	3.5	4.0	4.5	4.87	
Rated lifting capacity (kg)	3,030	2,130	1,730	1,330	980	780	630	550	
● 7.0-m boom									
Load radius (m)	2.2 and below	2.5	3.0	3.5	4.0	4.5	5.0	5.5	6.0
Rated lifting capacity (kg)	1,730	1,530	1,280	980	780	630	480	430	380
● 8.9-m boom									
Load radius (m)	3.0 and below	3.5	4.0	5.0	6.0	7.0	8.0	8.7	
Rated lifting capacity (kg)	930	830	730	480	380	280	230	200	
● 10.8-m boom									
Load radius (m)	4.0 and below	4.5	5.0	5.5	6.0	6.4	6.8	7.0	7.2
Rated lifting capacity (kg)	480	430	380	300	260	230	200	180	150
● 12.8-m boom									
Load radius (m)	5.3 and below	6.0	7.0	8.0	9.0	10.0	11.0	12.6	
Rated lifting capacity (kg)	280	240	210	180	160	140	130	100	
Table F TM-ZE296M / ZE296MH									
● 3.23-m/5.17-m boom									
Load radius (m)	1.4 and below	2.0	2.5	3.0	3.5	4.0	4.5	4.97	
Rated lifting capacity (kg)	3,030	2,130	1,730	1,430	1,230	1,030	830	680	
● 7.1-m boom									
Load radius (m)	2.2 and below	2.5	3.0	3.5	4.0	4.5	5.0	5.5	6.0
Rated lifting capacity (kg)	1,730	1,530	1,280	1,080	930	780	680	580	480
● 9.0-m boom									
Load radius (m)	3.0 and below	3.5	4.0	5.0	6.0	7.0	8.0	8.8	
Rated lifting capacity (kg)	930	830	730	580	480	380	280	230	
● 10.9-m boom									
Load radius (m)	4.0 and below	4.5	5.0	6.0	7.0	8.0	9.0	10.0	10.7
Rated lifting capacity (kg)	480	430	380	300	260	230	200	180	150
● 12.8-m boom									
Load radius (m)	5.3 and below	6.0	7.0	8.0	9.0	10.0	11.0	12.6	
Rated lifting capacity (kg)	280	240	210	180	160	140	130	100	

NOTES FOR TECHNICAL SPECIFICATIONS:
Operating speeds of the crane are guaranteed under the conditions that the pump delivery is 53 L/min.
NOTES FOR RATED LIFTING CAPACITIES:
The mass of hook (30 kg), slings and all other lifting devices must be added to the mass of the load.

TM-ZE260 series



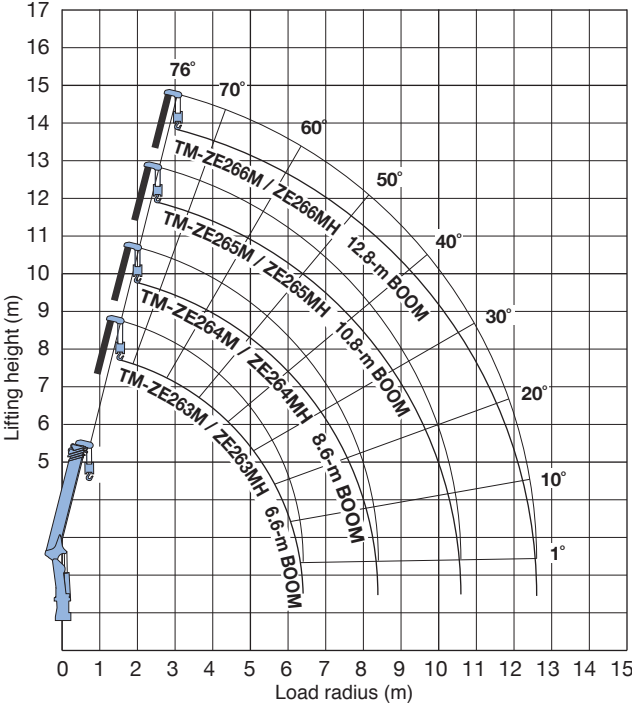
HOOK IN SYSTEM (TM-ZE260MH only)

The TM-ZE260MH features the "Hook-In" system to further enhance work efficiency. A pull of a lever and the crane hook is stowed automatically. No more manual fixing.

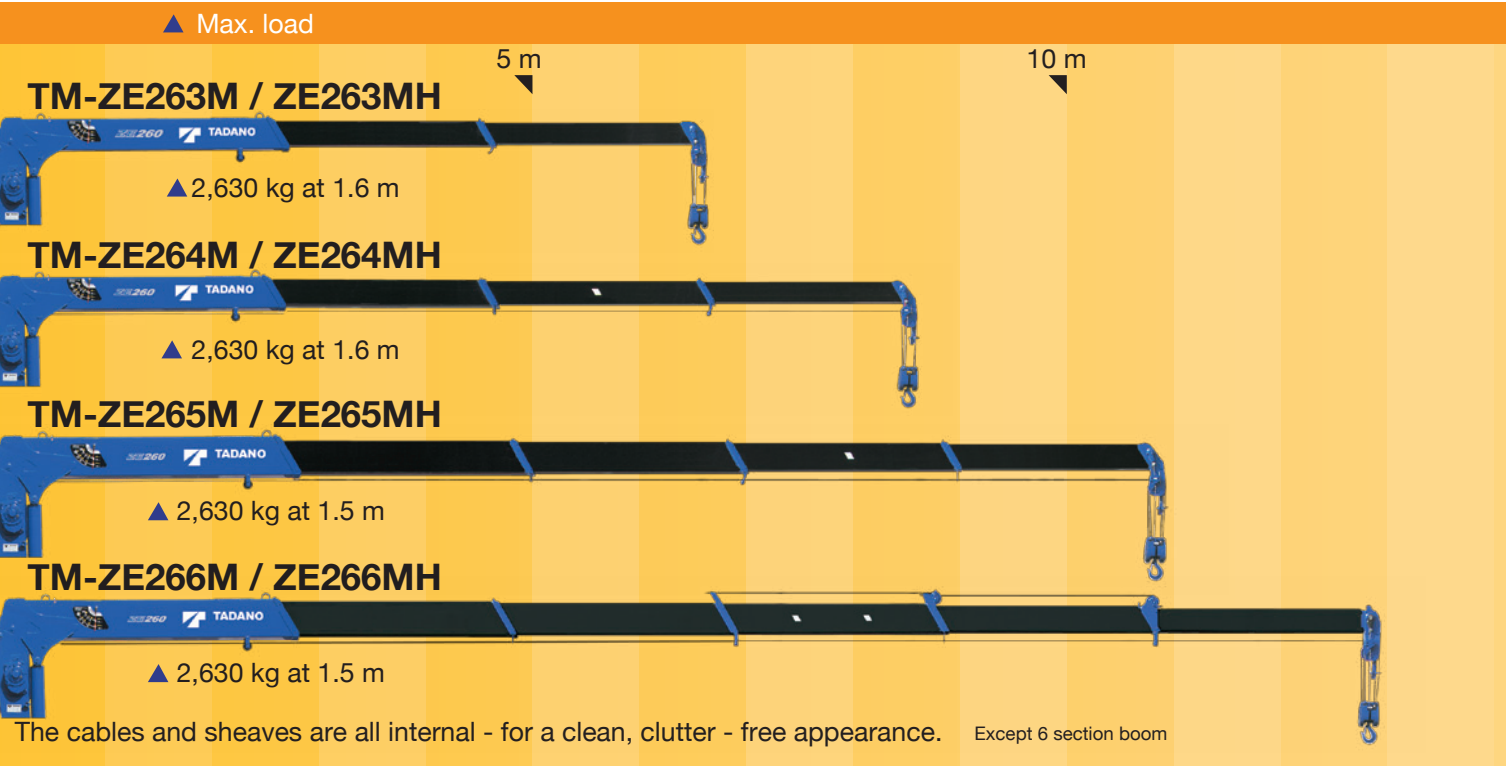


TM-ZE264MH

WORKING RANGE



NOTES FOR WORKING RANGE:
Boom deflection, and subsequent radius and boom angle change must be accounted for when applying load to hook.



The cables and sheaves are all internal - for a clean, clutter - free appearance. Except 6 section boom

TECHNICAL SPECIFICATIONS

MODEL	TM-ZE263M	TM-ZE263MH*	TM-ZE264M	TM-ZE264MH*	TM-ZE265M	TM-ZE265MH*	TM-ZE266M	TM-ZE266MH*
CRANE CAPACITY	2,630 kg at 1.6 m (4-parts of line)		2,630 kg at 1.6 m (4-parts of line)		2,630 kg at 1.5 m (4-parts of line)		2,630 kg at 1.5 m (4-parts of line)	
BOOM	Fully powered telescoping boom of pentagonal box construction.							
Number of sections	3		4		5		6	
Length	2.85 m - 6.6 m		2.87 m - 8.6 m		3.13 m - 10.8 m		3.23 m - 12.8 m	
Extending speed	3.75 m / 10 s		5.73 m / 12 s		7.67 m / 15.5 s		9.57 m / 17 s	
Elevating range/speed	1° to 76° / 6 s							
Max. lifting height**	Approx. 7.8 m**		Approx. 9.7 m**		Approx. 11.8 m**		Approx. 13.8 m**	
Max. load radius**	6.4 m**		8.4 m**		10.6 m**		12.6 m**	
WINCH	Hydraulic motor driven. Spur gear speed reduction, provided with mechanical brake.							
Max. single line pull	6.47 kN {660 kgf}							
Max. single line speed	68 m/min. (at 4th layer)							
Wire rope (Diameter x length)	8 mm x 45 m		8 mm x 54 m		8 mm x 66 m		8 mm x 75 m	
SLEWING	Hydraulic motor driven. Worm gear speed reduction. Continuous 360° full circle slewing on ball bearing slew ring. Automatic slewing lock.							
Slewing speed	2.5 min ⁻¹ {rpm}							
OUTRIGGERS	Manually extended sliders and hydraulically extended jacks Integral with crane frame							
Extension width	Max. : 3.0 m, Mid. : 2.4 m, Min. : 1.72 m							
HYDRAULIC SYSTEM	Multiple control valves with integral safety valves							
Control valves								
STANDARD SAFETY DEVICE	•Load meter •Load indicator •Anti-two-block alarm •Hoisting limiter •P.T.O. indicator lamp •Hook safety latch •Hydraulic safety valves •Level gauge							
SUITABLE TRUCKS	Gross vehicle mass 4,000 to 8,000 kg							

* WITH HOOK STOWING DEVICE. Mechanically stows hook beneath boom head.
** Boom deflection, and subsequent radius and boom angle change must be accounted for when applying load to hook.

RATED LIFTING CAPACITIES (With empty chassis)

Table A TM-ZE263M / ZE263MH									
• 2.85-m/4.74-m boom									
Load radius (m)	1.6 and below	1.8	2.0	2.5	3.0	3.5	4.0	4.54	
Rated lifting capacity (kg)	2,630	2,230	2,030	1,480	1,030	780	630	530	
• 6.6-m boom									
Load radius (m)	2.6 and below	2.8	3.0	3.5	4.0	4.5	5.0	5.5	6.0
Rated lifting capacity (kg)	1,230	1,130	1,030	780	630	530	430	380	350

TM-ZE264M / ZE264MH									
• 2.87-m/4.82-m boom									
Load radius (m)	1.6 and below	1.8	2.0	2.5	3.0	3.5	4.0	4.62	
Rated lifting capacity (kg)	2,630	2,230	2,030	1,480	1,030	780	630	480	
• 6.71-m boom									
Load radius (m)	2.6 and below	2.8	3.0	3.5	4.0	4.5	5.0	5.5	6.0
Rated lifting capacity (kg)	1,230	1,130	1,030	780	630	530	430	380	350
• 8.6-m boom									
Load radius (m)	3.8 and below	4.0	4.5	5.0	6.0	7.0	8.0	8.4	
Rated lifting capacity (kg)	680	630	530	430	330	250	200	180	

Table C TM-ZE263M / ZE263MH									
• 2.85-m/4.74-m boom									
Load radius (m)	1.6 and below	1.8	2.0	2.5	3.0	3.5	4.0	4.54	
Rated lifting capacity (kg)	2,630	2,230	2,030	1,530	1,180	880	730	580	
• 6.6-m boom									
Load radius (m)	2.8 and below	3.0	3.5	4.0	4.5	5.0	5.5	6.0	6.4
Rated lifting capacity (kg)	1,230	1,130	880	680	580	480	430	380	350

TM-ZE264M / ZE264MH									
• 2.87-m/4.82-m boom									
Load radius (m)	1.6 and below	1.8	2.0	2.5	3.0	3.5	4.0	4.62	
Rated lifting capacity (kg)	2,630	2,230	2,030	1,530	1,130	880	680	530	
• 6.71-m boom									
Load radius (m)	2.8 and below	3.0	3.5	4.0	4.5	5.0	5.5	6.0	6.51
Rated lifting capacity (kg)	1,230	1,130	880	680	580	480	400	380	330
• 8.6-m boom									
Load radius (m)	4.0 and below	4.5	5.0	6.0	7.0	8.0	8.4		
Rated lifting capacity (kg)	680	580	480	380	280	230	200		

TM-ZE265M / ZE265MH									
• 3.13-m/5.07-m boom									
Load radius (m)	1.5 and below	1.8	2.0	2.5	3.0	3.5	4.0	4.87	
Rated lifting capacity (kg)	2,630	2,130	1,930	1,530	1,030	730	580	430	
• 7.0-m boom									
Load radius (m)	2.8 and below	3.0	3.5	4.0	4.5	5.0	5.5	6.0	6.8
Rated lifting capacity (kg)	1,230	1,030	730	580	480	400	330	280	230
• 8.9-m boom									
Load radius (m)	3.7 and below	4.0	5.0	6.0	7.0	8.0	8.7		
Rated lifting capacity (kg)	680	580	380	280	230	180	150		
• 10.8-m boom									
Load radius (m)	4.5 and below	5.0	6.0	7.0	8.0	9.0	10.0	10.6	
Rated lifting capacity (kg)	380	330	250	210	180	150	130	100	

TM-ZE266M / ZE266MH									
• 3.23-m/5.17-m boom									
Load radius (m)	1.5 and below	1.8	2.0	2.5	3.0	3.5	4.0	4.97	
Rated lifting capacity (kg)	2,630	2,130	1,930	1,530	1,230	1,030	880	630	
• 7.1-m boom									
Load radius (m)	3.0 and below	3.5	4.0	4.5	5.0	5.5	6.0	6.9	
Rated lifting capacity (kg)	1,230	1,030	880	730	580	530	480	380	
• 9.0-m boom									
Load radius (m)	4.0 and below	4.5	5.0	6.0	7.0	8.0	8.8		
Rated lifting capacity (kg)	680	580	530	430	350	300	230		
• 10.9-m boom									
Load radius (m)	4.5 and below	5.0	6.0	7.0	8.0	9.0	10.0	10.7	
Rated lifting capacity (kg)	380	330	250	210	180	150	130	100	
• 12.8-m boom									
Load radius (m)	6.0 and below	7.0	8.0	9.0	10.0	11.0	12.6		
Rated lifting capacity (kg)	220	180	150	130	120	120	100		

Table D TM-ZE263M / ZE263MH									
• 2.85-m/4.74-m boom									
Load radius (m)	1.6 and below	1.8	2.0	2.5	3.0	3.5	4.0	4.54	
Rated lifting capacity (kg)	2,630	2,230	2,030	1,630	1,330	1,130	980	880	
• 6.6-m boom									
Load radius (m)	2.8 and below	3.0	3.5	4.0	4.5	5.0	5.5	6.0	6.4
Rated lifting capacity (kg)	1,280	1,230	1,080	930	800	700	630	580	550

TM-ZE264M / ZE264MH									
• 2.87-m/4.82-m boom									
Load radius (m)	1.6 and below	1.8	2.0	2.5	3.0	3.5	4.0	4.62	
Rated lifting capacity (kg)	2,630	2,230	2,030	1,630	1,330	1,130	980	830	
• 6.71-m boom									
Load radius (m)	2.8 and below	3.0	3.5	4.0	4.5	5.0	5.5	6.0	6.51
Rated lifting capacity (kg)	1,280	1,230	1,080	930	780	700	630	580	530
• 8.6-m boom									
Load radius (m)	4.0 and below	4.5	5.0	6.0	7.0	8.0	8.4		
Rated lifting capacity (kg)	700	630	550	450	380	330	310		

TM-ZE265M / ZE265MH									
● 3.13-m/5.07-m boom									
Load radius (m)	1.5 and below	1.8	2.0	2.5	3.0	3.5	4.0	4.87	
Rated lifting capacity (kg)	2,630	2,180	1,980	1,580	1,330	1,130	980	830	
● 7.0-m boom									
Load radius (m)	2.8 and below	3.0	3.5	4.0	4.5	5.0	5.5	6.0	6.8
Rated lifting capacity (kg)	1,280	1,230	1,080	930	800	700	630	580	530
● 8.9-m boom									
Load radius (m)	3.7 and below	4.0	5.0	6.0	7.0	8.0		8.7	
Rated lifting capacity (kg)	700	700	550	450	380	350	330		
● 10.8-m boom									
Load radius (m)	4.5 and below	5.0	6.0	7.0	8.0	9.0	10.0	10.6	
Rated lifting capacity (kg)	480	430	330	280	230	200	180	160	