



CARGO CRANE

For Small Size Truck

ZE290HRS / ZE260HRS series



IDEAL Cargo Crane, TADANO ZE

The ZE features all the Tadano Cargo Crane technology that is recognized the world over.

The key development concepts remain:

EXCELLENT QUALITY, EASY OPERATION AND EASY MAINTENANCE.

NEW "HOOK-IN" SYSTEM

The "Hook-In" system further enhances work efficiency.

When the "Hook-In" switch and swing switch are operated, the crane boom and jack is stowed automatically.

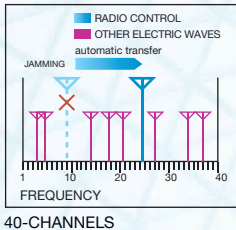


RADIO CONTROLLER WITH LIQUID-CRYSTAL DISPLAY

Newly Developed Radio Controller, of low electric power consumption type, displays at all times operating conditions such as the actual load, rated load, moment ratio on the liquid-crystal screen to further enhance safety and working efficiency.

High-Powered Radio Controller

Radio Controller with powerful transmitting output automatically selects a frequency free of jamming, out of as many frequencies as 40 channels, to avoid interference troubles.



Durable Structure

New type Radio Controller, reviewed from the very basic conception offers further improved durability and water-repellent condition along with shock-resistant construction.

Selectable Speed Mode

Speed mode according to operating conditions can be selected from the high-speed mode, the middle speed mode and the low speed mode.



WATER-RESISTANCE

CENTRALIZED CONTROL PANEL

Installed on both sides of the boom post is the centralized control panel where operating switches and the lifting chart needed for crane operation are grouped together and arranged on a single panel each. In addition, on the upper part of the panel, warning lamps as well as outrigger-extended-width indicating lamps are fitted to enhance visibility.



LEFT-HAND SIDE



RIGHT-HAND SIDE

QUICKER WORK WITH OUTRIGGER MECHANISM

The outrigger sliders can be easily operated, using a grip to lock or release and extend or retract.

Further more safety, new lock system prevents the outriggers from swinging out during vehicle travel.

A level gauge is provided as standard equipment.



NEW LOCK SYSTEM

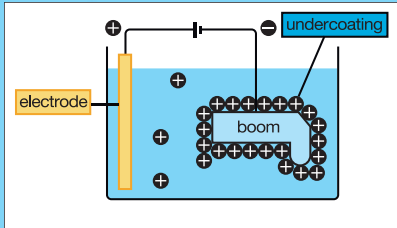
STRONGER AND LIGHTER BOOM

Tadano's unique pentagonal boom is made of high-tensile steel and a section of boom is manufactured of bended one piece steel plate for lighter boom weight and powerful lifting capability.



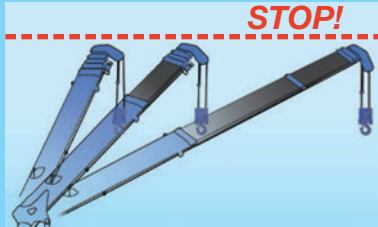
CATIONIC ELECTRO-DEPOSITION COATING

The undercoating of the crane is done by Cationic Electro-deposition coating. Soaking the each component and even the narrow inner booms and frames are thoroughly undercoated.



BOOM HEIGHT LIMIT FUNCTION

WHL (Working Height Limiter) is designed to stop the boom elevation or telescoping when the boom tip reaches the registered height. (as pre programmed by the operator) This function secures safety particularly when working under the roof or in the tunnel or every height limited condition.



AML

The AML is a system that monitors and controls crane working conditions including the state of a lifted load to ensure safer operation in addition to the outrigger middle extension function now available for the model.

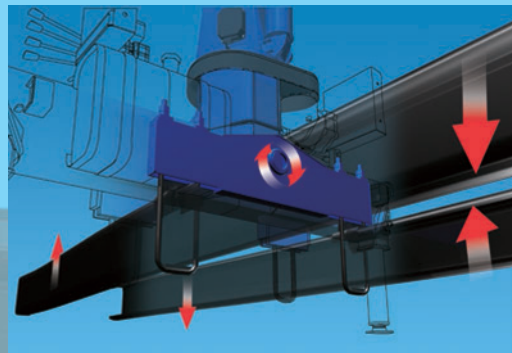
Furthermore, when the crane reaches the registered limit, warning lamps light up at 90% and the crane operation stop at 100%.

JACK INTERLOCK

Jack interlock system ensures that outriggers are deployed before crane is allowed to be unfolded. Automatic crane capacity deration should horizontal outrigger extension be not fully extended.

THREE-POINT SUPPORT SYSTEM (Equalizer Crane Support)

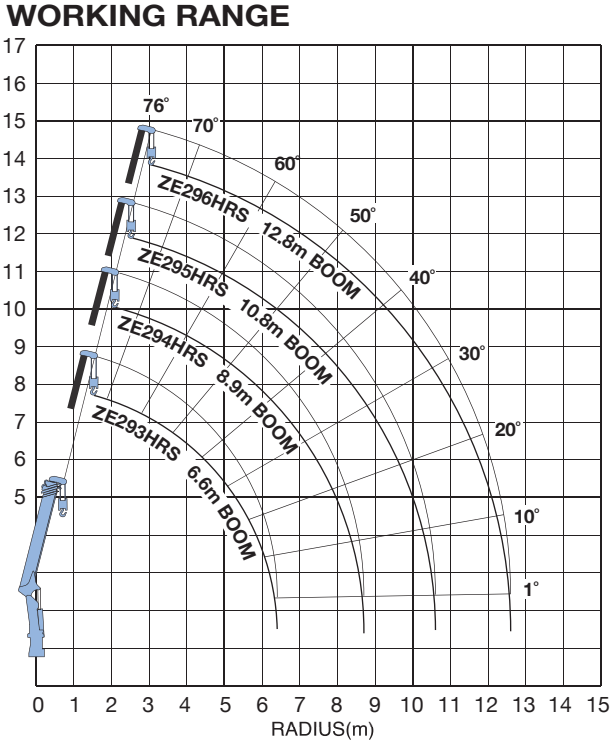
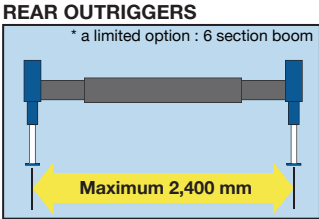
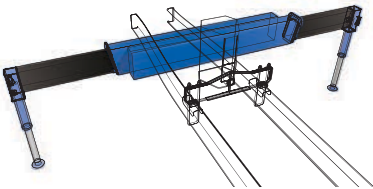
The equalizer crane support system protects the chassis frame by evenly distributing the load applied to the frame during the lifting operation and the vehicle travel to prevent excessive stress concentration at any one point.



ZE290HRS series



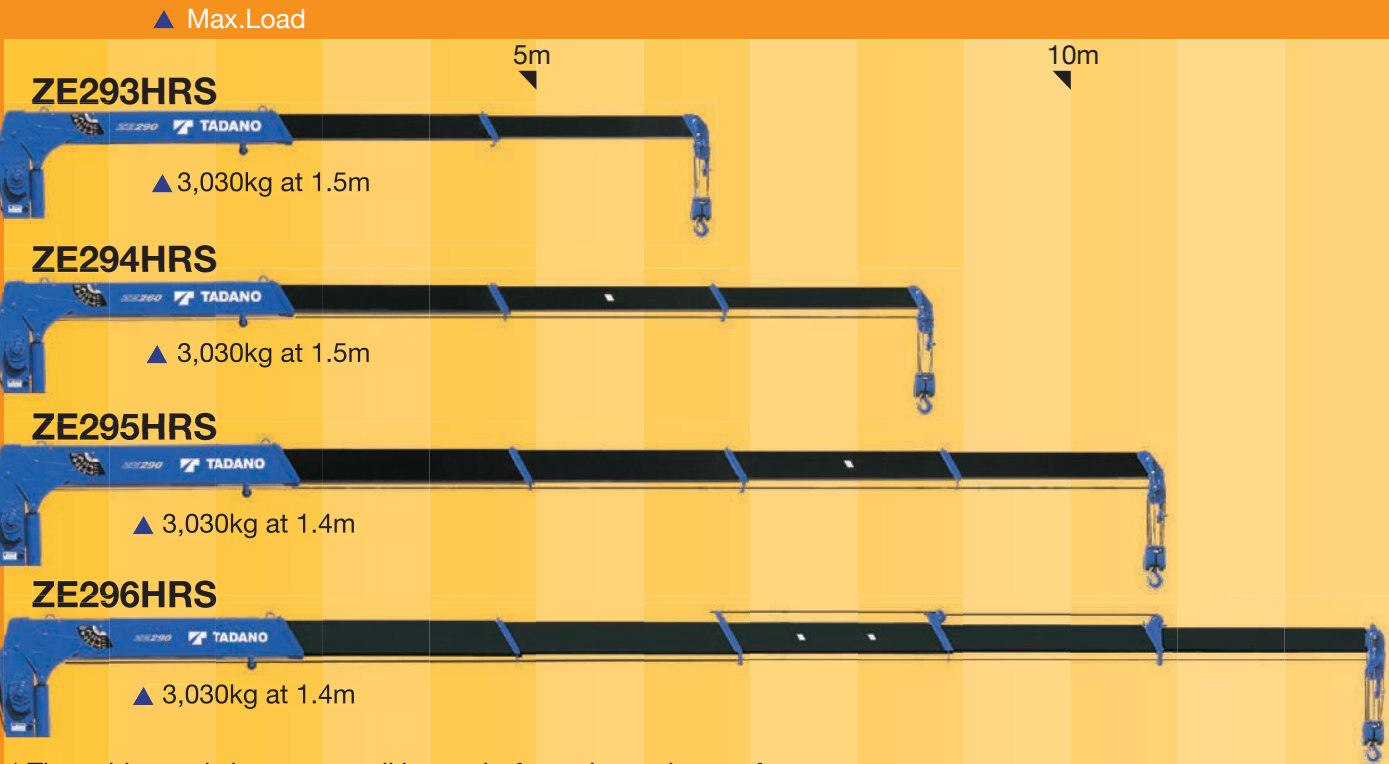
PARABOX OUTRIGGER (ZE290 series)



NOTE:
Lifting heights and boom angles are based on a straight (unladen) boom, and allowance should be made for boom deflection obtained under laden conditions.



ZE294HRS



* The cables and sheaves are all internal - for a clean, clutter - free appearance. * Except 6 section boom

TECHNICAL SPECIFICATIONS

MODEL	ZE293HRS	ZE294HRS	ZE295HRS	ZE296HRS
CRANE CAPACITY	3,030kg at 1.5m (4-part lines)	3,030kg at 1.5m (4-part lines)	3,030kg at 1.4m (4-part lines)	3,030kg at 1.4m (4-part lines)
BOOM	Fully powered telescoping boom of pentagonal box construction.			
Sections	3	4	5	6
Length	2.85m - 6.6m	3.17m - 8.9m	3.13m - 10.8m	3.23m - 12.8m
Extending Speed	3.75m / 10.5s	5.73m / 13s	7.67m / 15.5s	9.57m / 17s
Elevation Range/Speed	1° to 76° /6s			
Max. Hook Height*	Approx. 7.8m*	Approx. 10.0m*	Approx. 11.8m*	Approx. 13.8m*
Max. Load Radius*	6.4m*	8.7m*	10.6m*	12.6m*
WINCH	Hydraulic motor driven. Spur gear speed reduction, provided with mechanical brake.			
Max. Single Line Pull	7.45kN {760kgf}			
Max. Single Line Speed	68m/min. (at 4th layer)			
Wire rope (Diameter x length)	8mm x 45m	8mm x 56m	8mm x 66m	8mm x 75m
SWING	Hydraulic motor driven. Worm gear speed reduction. Continuous 360° full circle swing on ball bearing slew ring. Automatic swing lock.			
Speed	2.5 min ⁻¹ {rpm}			
OUTRIGGERS	Manually extended sliders and hydraulically extended jacks Integral with crane frame Power up and down Max.: 3.4m, Mid.: 2.9m / 2.4m, Min.: 1.72m			
Extended Width				
HYDRAULIC SYSTEM				
Control Valves	Multiple control valves with integral safety valve			
STANDARD SAFETY EQUIPMENT	•AML (Automatic Moment Limiter) with load indicator/Moment indicator •WHL (Working Height Limiter) •Load Meter •Radius Indicator •Emergency stop switch on radio controller •Over-winding alarm •Hoisting limiter •Hook safety latch •Hydraulic safety valves, check valves and holding valves •Level gauge			
SUITABLE TRUCKS	Gross vehicle mass 4,000 to 8,000kg			

RATED LIFTING CAPACITIES - Empty Chassis

Table A

ZE293HRS

- 2.85m/4.74m boom

Load Radius (m)	1.5 and below	2.0	2.5	3.0	3.5	4.0	4.54
Rated Lifting Capacity (kg)	3,030	2,280	1,730	1,230	930	730	630

- 6.6m boom

Load Radius (m)	2.2 and below	2.5	3.0	3.5	4.0	4.5	5.0	5.5	6.0	6.4
Rated Lifting Capacity (kg)	1,880	1,630	1,230	930	730	580	480	430	380	350

ZE294HRS									
• 3.17m/5.12m boom									
Load Radius (m)	1.5 and below	2.0	2.5	3.0	3.5	4.0	4.5	4.92	
Rated Lifting Capacity (kg)	3,030	2,280	1,730	1,180	880	680	580	530	
• 7.01m boom									
Load Radius (m)	2.2 and below	2.5	3.0	3.5	4.0	4.5	5.0	5.5	6.0
Rated Lifting Capacity (kg)	1,880	1,630	1,150	880	680	580	480	400	350
• 8.9m boom									
Load Radius (m)	3.0 and below	3.5	4.0	5.0	6.0	7.0	8.0	8.7	
Rated Lifting Capacity (kg)	980	830	680	450	350	280	230	200	

Table C									
ZE293HRS									
• 2.85m/4.74m boom									
Load Radius (m)	1.5 and below	2.0	2.5	3.0	3.5	4.0	4.54		
Rated Lifting Capacity (kg)	3,030	2,280	1,830	1,430	1,080	830	730		
• 6.6m boom									
Load Radius (m)	2.2 and below	2.5	3.0	3.5	4.0	4.5	5.0	5.5	6.0
Rated Lifting Capacity (kg)	1,880	1,630	1,330	1,030	830	680	580	530	480
								430	6.4

ZE294HRS									
• 3.17m/5.12m boom									
Load Radius (m)	1.5 and below	2.0	2.5	3.0	3.5	4.0	4.5	4.92	
Rated Lifting Capacity (kg)	3,030	2,280	1,830	1,380	1,030	830	680	580	
• 7.01m boom									
Load Radius (m)	2.2 and below	2.5	3.0	3.5	4.0	4.5	5.0	5.5	6.0
Rated Lifting Capacity (kg)	1,880	1,630	1,330	1,030	800	680	580	480	430
• 8.9m boom									
Load Radius (m)	3.0 and below	3.5	4.0	5.0	6.0	7.0	8.0	8.7	
Rated Lifting Capacity (kg)	980	880	780	550	430	330	280	250	

ZE295HRS									
• 3.13m/5.07m boom									
Load Radius (m)	1.4 and below	2.0	2.5	3.0	3.5	4.0	4.5	4.87	
Rated Lifting Capacity (kg)	3,030	2,130	1,730	1,330	980	780	630	550	
• 7.0m boom									
Load Radius (m)	2.2 and below	2.5	3.0	3.5	4.0	4.5	5.0	5.5	6.0
Rated Lifting Capacity (kg)	1,730	1,530	1,280	980	780	630	480	430	380
• 8.9m boom									
Load Radius (m)	3.0 and below	3.5	4.0	5.0	6.0	7.0	8.0	8.7	
Rated Lifting Capacity (kg)	930	830	730	480	380	280	230	200	

ZE296HRS										
• 3.23m/5.17m boom										
Load Radius (m)	1.4 and below	2.0	2.5	3.0	3.5	4.0	4.5	4.97		
Rated Lifting Capacity (kg)	3,030	2,130	1,730	1,430	1,230	1,030	830	680		
• 7.1m boom										
Load Radius (m)	2.2 and below	2.5	3.0	3.5	4.0	4.5	5.0	5.5	6.0	6.9
Rated Lifting Capacity (kg)	1,730	1,530	1,280	1,080	930	780	680	580	480	380
• 9.0m boom										
Load Radius (m)	3.0 and below	3.5	4.0	5.0	6.0	7.0	8.0	8.8		
Rated Lifting Capacity (kg)	930	830	730	580	480	380	280	230		
• 10.9m boom										
Load Radius (m)	4.0 and below	4.5	5.0	6.0	7.0	8.0	9.0	10.0	10.7	
Rated Lifting Capacity (kg)	480	430	380	300	260	230	200	180	150	
• 12.8m boom										
Load Radius (m)	5.3 and below	6.0	7.0	8.0	9.0	10.0	11.0	12.6		
Rated Lifting Capacity (kg)	280	240	210	180	160	140	130	100		

Table D

ZE293HRS

• 2.85m/4.74m boom

Load Radius (m)	1.5 and below	2.0	2.5	3.0	3.5	4.0	4.54
Rated Lifting Capacity (kg)	3,030	2,330	1,880	1,500	1,250	1,080	980

• 6.6m boom

Load Radius (m)	2.2 and below	2.5	3.0	3.5	4.0	4.5	5.0	5.5	6.0	6.4
Rated Lifting Capacity (kg)	1,880	1,680	1,430	1,230	1,080	950	830	730	650	580

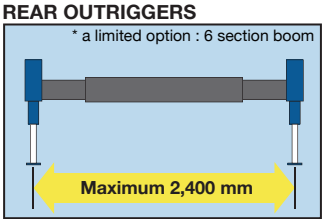
ZE294HRS									
• 3.17m/5.12m boom									
Load Radius (m)	1.5 and below	2.0	2.5	3.0	3.5	4.0	4.5	4.92	
Rated Lifting Capacity (kg)	3,030	2,330	1,880	1,500	1,250	1,080	930	850	
• 7.01m boom									
Load Radius (m)	2.2 and below	2.5	3.0	3.5	4.0	4.5	5.0	5.5	6.0
Rated Lifting Capacity (kg)	1,880	1,680	1,430	1,230	1,080	930	830	730	650
• 8.9m boom									
Load Radius (m)	3.0 and below	3.5	4.0	5.0	6.0	7.0	8.0	8.7	
Rated Lifting Capacity (kg)	1,030	930	830	680	580	480	400	350	

ZE295HRS										
• 3.13m/5.07m boom										
Load Radius (m)	1.45 and below	2.0	2.5	3.0	3.5	4.0	4.5	4.87		
Rated Lifting Capacity (kg)	3,030	2,180	1,730	1,430	1,230	1,080	930	830		
• 7.0m boom										
Load Radius (m)	2.2 and below	2.5	3.0	3.5	4.0	4.5	5.0	5.5	6.0	6.8
Rated Lifting Capacity (kg)	1,880	1,680	1,430	1,180	1,030	880	780	680	630	530
• 8.9m boom										
Load Radius (m)	3.0 and below	3.5	4.0	5.0	6.0	7.0	8.0	8.7		
Rated Lifting Capacity (kg)	980	900	830	680	580	480	380	350		
• 10.8m boom										
Load Radius (m)	4.0 and below	4.5	5.0	6.0	7.0	8.0	9.0	10.0	10.6	
Rated Lifting Capacity (kg)	580	530	480	400	330	280	250	230	210	

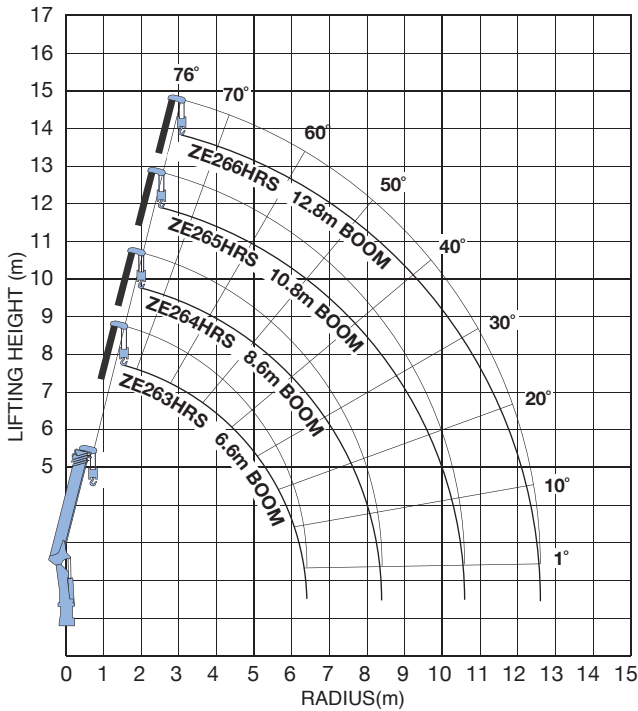
ZE296HRS									
• 3.23m/5.17m boom									
Load Radius (m)	1.45 and below	2.0	2.5	3.0	3.5	4.0	4.5	4.97	
Rated Lifting Capacity (kg)	3,030	2,180	1,730	1,430	1,230	1,050	900	800	
• 7.1m boom									
Load Radius (m)	2.2 and below	2.5	3.0	3.5	4.0	4.5	5.0	5.5	6.0
Rated Lifting Capacity (kg)	1,880	1,680	1,430	1,180	1,030	880	780	680	600
• 9.0m boom									
Load Radius (m)	3.0 and below	3.5	4.0	5.0	6.0	7.0	8.0	8.8	
Rated Lifting Capacity (kg)	980	900	830	680	580	480	380	330	
• 10.9m boom									
Load Radius (m)	4.0 and below	4.5	5.0	6.0	7.0	8.0	9.0	10.0	10.7
Rated Lifting Capacity (kg)	580	530	480	400	330	280	250	230	210
• 12.8m boom									
Load Radius (m)	5.3 and below	6.0	7.0	8.0	9.0	10.0	11.0	12.6	
Rated Lifting Capacity (kg)	280	250	220	200	180	160	140	120	

TECHNICAL SPECIFICATIONS NOTE:
1. Operating speeds of the crane are guaranteed under the conditions that the pump delivery is 53L/min.
2. *No allowance made for boom deflection under laden conditions.
RATED LIFTING CAPACITIES NOTE:
The mass of hook (30kg), slings and all similarly used load handling devices must be added to the mass of the load.

ZE260HRS series



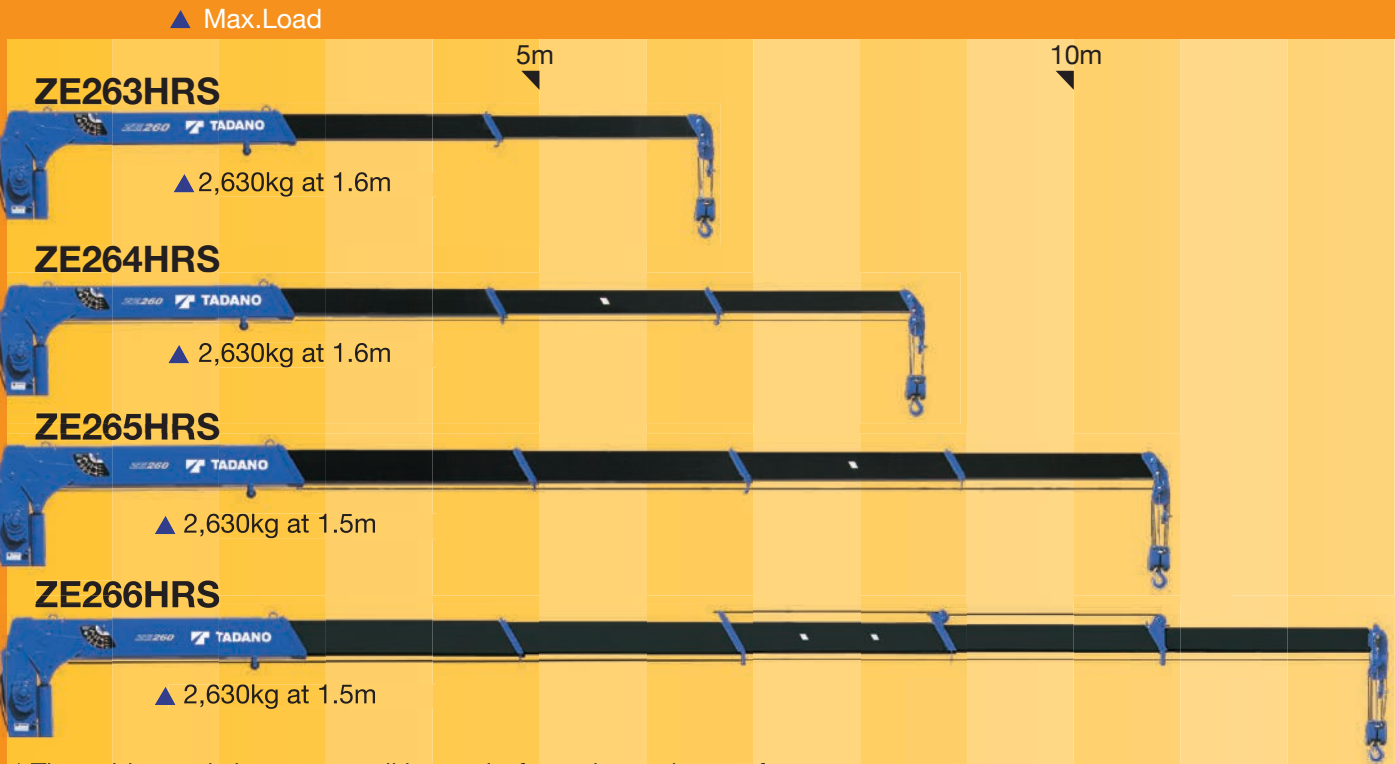
WORKING RANGE



NOTE:
Lifting heights and boom angles are based on a straight (unladen) boom, and allowance should be made for boom deflection obtained under laden conditions.



ZE264HRS



* The cables and sheaves are all internal - for a clean, clutter - free appearance. * Except 6 section boom

TECHNICAL SPECIFICATIONS

MODEL	ZE263HRS	ZE264HRS	ZE265HRS	ZE266HRS
CRANE CAPACITY	2,630kg at 1.6m (4-part lines)	2,630kg at 1.6m (4-part lines)	2,630kg at 1.5m (4-part lines)	2,630kg at 1.5m (4-part lines)
BOOM	Fully powered telescoping boom of pentagonal box construction.			
Sections	3	4	5	6
Length	2.85m - 6.6m	2.87m - 8.6m	3.13m - 10.8m	3.23m - 12.8m
Extending Speed	3.75m / 10s	5.73m / 12s	7.67m / 15.5s	9.57m / 17s
Elevation Range/Speed	1° to 76° /6s			
Max. Hook Height*	Approx. 7.8m*	Approx. 9.7m*	Approx. 11.8m*	Approx. 13.8m*
Max. Load Radius*	6.4m*	8.4m*	10.6m*	12.6m*
WINCH	Hydraulic motor driven. Spur gear speed reduction, provided with mechanical brake.			
Max. Single Line Pull	6.47kN {660kgf}			
Max. Single Line Speed	68m/min. (at 4th layer)			
Wire rope (Diameter x length)	8mm x 45m	8mm x 54m	8mm x 66m	8mm x 75m
SWING	Hydraulic motor driven. Worm gear speed reduction. Continuous 360° full circle swing on ball bearing slew ring. Automatic swing lock.			
Speed	2.5 min ⁻¹ {rpm}			
OUTRIGGERS	Manually extended sliders and hydraulically extended jacks Integral with crane frame Power up and down Max.: 3.0m, Mid.: 2.4m, Min.: 1.72m			
Extended Width				
HYDRAULIC SYSTEM				
Control Valves	Multiple control valves with integral safety valve			
STANDARD SAFETY EQUIPMENT	•AML (Automatic Moment Limiter) with load indicator/Moment indicator •VHL (Working Height Limiter) •Load Meter •Radius Indicator •Emergency stop switch on radio controller •Over-winding alarm •Hoisting limiter •Hook safety latch •Hydraulic safety valves, check valves and holding valves •Level gauge			
SUITABLE TRUCKS	Gross vehicle mass 4,000 to 8,000kg			

RATED LIFTING CAPACITIES - Empty Chassis

Table A									
ZE263HRS									
• 2.85m/4.74m boom									
Load Radius (m)	1.6 and below	1.8	2.0	2.5	3.0	3.5	4.0	4.54	
Rated Lifting Capacity (kg)	2,630	2,230	2,030	1,480	1,030	780	630	530	
• 6.6m boom									
Load Radius (m)	2.6 and below	2.8	3.0	3.5	4.0	4.5	5.0	5.5	6.0
Rated Lifting Capacity (kg)	1,230	1,130	1,030	780	630	530	430	380	350

ZE264HRS									
• 2.87m/4.82m boom									
Load Radius (m)	1.6 and below	1.8	2.0	2.5	3.0	3.5	4.0	4.62	
Rated Lifting Capacity (kg)	2,630	2,230	2,030	1,480	1,030	780	630	480	
• 6.71m boom									
Load Radius (m)	2.6 and below	2.8	3.0	3.5	4.0	4.5	5.0	5.5	6.0
Rated Lifting Capacity (kg)	1,230	1,130	1,030	780	630	530	430	380	350
• 8.6m boom									
Load Radius (m)	3.8 and below	4.0	4.5	5.0	6.0	7.0	8.0	8.4	
Rated Lifting Capacity (kg)	680	630	530	430	330	250	200	180	

Table C									
ZE263HRS									
• 2.85m/4.74m boom									
Load Radius (m)	1.6 and below	1.8	2.0	2.5	3.0	3.5	4.0	4.54	
Rated Lifting Capacity (kg)	2,630	2,230	2,030	1,530	1,180	880	730	580	
• 6.6m boom									
Load Radius (m)	2.8 and below	3.0	3.5	4.0	4.5	5.0	5.5	6.0	6.4
Rated Lifting Capacity (kg)	1,230	1,130	880	680	580	480	430	380	350

ZE264HRS									
• 2.87m/4.82m boom									
Load Radius (m)	1.6 and below	1.8	2.0	2.5	3.0	3.5	4.0	4.62	
Rated Lifting Capacity (kg)	2,630	2,230	2,030	1,530	1,130	880	680	530	
• 6.71m boom									
Load Radius (m)	2.8 and below	3.0	3.5	4.0	4.5	5.0	5.5	6.0	6.51
Rated Lifting Capacity (kg)	1,230	1,130	880	680	580	480	400	380	330
• 8.6m boom									
Load Radius (m)	4.0 and below	4.5	5.0	6.0	7.0	8.0	8.4		
Rated Lifting Capacity (kg)	680	580	480	380	280	230	200		

ZE265HRS									
• 3.13m/5.07m boom									
Load Radius (m)	1.5 and below	1.8	2.0	2.5	3.0	3.5	4.0	4.87	
Rated Lifting Capacity (kg)	2,630	2,130	1,930	1,530	1,030	730	580	430	
• 7.0m boom									
Load Radius (m)	2.8 and below	3.0	3.5	4.0	4.5	5.0	5.5	6.0	6.8
Rated Lifting Capacity (kg)	1,230	1,030	730	580	480	400	330	280	230
• 8.9m boom									
Load Radius (m)	3.7 and below	4.0	5.0	6.0	7.0	8.0	8.7		
Rated Lifting Capacity (kg)	680	580	380	280	230	180	150		
• 10.8m boom									
Load Radius (m)	4.5 and below	5.0	6.0	7.0	8.0	9.0	10.0	10.6	
Rated Lifting Capacity (kg)	380	330	250	210	180	150	130	100	

ZE266HRS									
• 3.23m/5.17m boom									
Load Radius (m)	1.5 and below	1.8	2.0	2.5	3.0	3.5	4.0	4.97	
Rated Lifting Capacity (kg)	2,630	2,130	1,930	1,530	1,230	1,030	880	630	
• 7.1m boom									
Load Radius (m)	3.0 and below	3.5	4.0	4.5	5.0	5.5	6.0	6.9	
Rated Lifting Capacity (kg)	1,230	1,030	880	730	580	530	480	380	
• 9.0m boom									
Load Radius (m)	4.0 and below	4.5	5.0	6.0	7.0	8.0	8.8		
Rated Lifting Capacity (kg)	680	580	530	430	350	300	230		
• 10.9m boom									
Load Radius (m)	4.5 and below	5.0	6.0	7.0	8.0	9.0	10.0	10.7	
Rated Lifting Capacity (kg)	380	330	250	210	180	150	130	100	
• 12.8m boom									
Load Radius (m)	6.0 and below	7.0	8.0	9.0	10.0	11.0	12.6		
Rated Lifting Capacity (kg)	220	180	150	130	120	120	100		

Table D									
ZE263HRS									
• 2.85m/4.74m boom									
Load Radius (m)	1.6 and below	1.8	2.0	2.5	3.0	3.5	4.0	4.54	
Rated Lifting Capacity (kg)	2,630	2,230	2,030	1,630	1,330	1,130	980	880	
• 6.6m boom									
Load Radius (m)	2.8 and below	3.0	3.5	4.0	4.5	5.0	5.5	6.0	6.4
Rated Lifting Capacity (kg)	1,280	1,230	1,080	930	800	700	630	580	550

ZE264HRS									
• 2.87m/4.82m boom									
Load Radius (m)	1.6 and below	1.8	2.0	2.5	3.0	3.5	4.0	4.62	
Rated Lifting Capacity (kg)	2,630	2,230	2,030	1,630	1,330	1,130	980	830	
• 6.71m boom									
Load Radius (m)	2.8 and below	3.0	3.5	4.0	4.5	5.0	5.5	6.0	6.51
Rated Lifting Capacity (kg)	1,280	1,230	1,080	930	780	700	630	580	530
• 8.6m boom									
Load Radius (m)	4.0 and below	4.5	5.0	6.0	7.0	8.0	8.4		
Rated Lifting Capacity (kg)	700	630	550	450	380	330	310		

ZE265HRS									
• 3.13m/5.07m boom									
Load Radius (m)	1.5 and below	1.8	2.0	2.5	3.0	3.5	4.0	4.87	
Rated Lifting Capacity (kg)	2,630	2,180	1,980	1,580	1,330	1,130	980	830	
• 7.0m boom									
Load Radius (m)	2.8 and below	3.0	3.5	4.0	4.5	5.0	5.5	6.0	6.8
Rated Lifting Capacity (kg)	1,280	1,230	1,080	930	800	700	630	580	530
• 8.9m boom									
Load Radius (m)	3.7 and below	4.0	5.0	6.0	7.0	8.0	8.7		
Rated Lifting Capacity (kg)	700	700	550	450	380	350	330		
• 10.8m boom									
Load Radius (m)	4.5 and below	5.0	6.0	7.0	8.0	9.0	10.0	10.6	
Rated Lifting Capacity (kg)	480	430	330	280	230	200	180	160	

ZE266HRS								
• 3.23m/5.17m boom								
Load Radius (m)	1.5 and below	1.8	2.0	2.5	3.0	3.5	4.0	4.97
Rated Lifting Capacity (kg)	2,630	2,180	1,980	1,580	1,330	1,130	980	780
• 7.1m boom								
Load Radius (m)	3.0 and below	3.5	4.0	4.5	5.0	5.5	6.0	6.9
Rated Lifting Capacity (kg)	1,230	1,080	930	800	700	630	580	500
• 9.0m boom								
Load Radius (m)	4.0 and below	4.5	5.0	6.0	7.0	8.0	8.8	
Rated Lifting Capacity (kg)	700	630	550	450	380	330	300	
• 10.9m boom								
Load Radius (m)	4.5 and below	5.0	6.0	7.0	8.0	9.0	10.0	10.7
Rated Lifting Capacity (kg)	480	430	330	280	230	200	180	160
• 12.8m boom								
Load Radius (m)	6.0 and below	7.0	8.0	9.0	10.0	11.0	12.6	
Rated Lifting Capacity (kg)	230	200	170	150	130	120	100	



TADANO LTD. (International Division)
4-12, Kamezawa 2-chome, Sumida-ku Tokyo 130-0014, Japan
Tel: 81-3-3621-7750 Fax: 81-3-3621-7785
E-mail: tdnihq@tadano.co.jp

<http://www.tadano.co.jp/indexe.html>



Continuing technical development requires Tadano to retain the right to make specifications, equipment and price changes without notice. Some specifications are subject to change.

ZE290HRS/260HRS-2010-7-1-2000 Printed in Japan